

Monthly Children's Hospital Helicopter Activity Summary

March 2021



33

Patient Transport Flights



1

Flight Used the Northern Flight Path

7

Overnight Patient Transport Flights



57

Flights Legs to and from Lakefront Airport



Patients were flown to Children's Hospital for...

- 12 **Pediatric Critical Care Patients**
Example: septic shock, hypothermia, upper GI bleed
- 15 **Neonatal Intensive Care Patients**
Example: renal failure, sepsis
- 3 **Cardiac Critical Care Patients**
Example: congenital heart defects
- 0 **Trauma Patients**
Example: n / a
- 3 **Other**
Example: brain bleed



Children's Hospital
New Orleans
LCMC Health

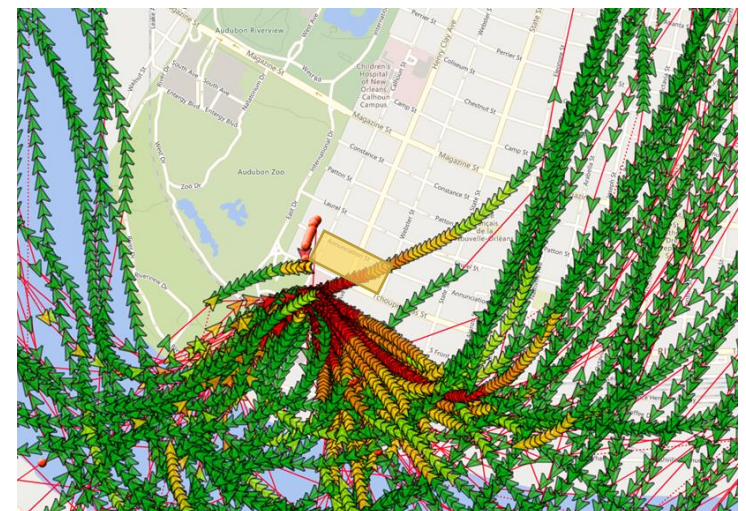
Referring facilities:

- Christus St. Francis Cabrini – Alexandria
- East Jefferson General Hospital
- Forrest General Hospital
- Highland Community Hospital
- Leonard J. Chabert Medical Center
- North Oaks Medical Center
- Ochsner St. Mary Hospital
- Opelousas General Hospital
- Our Lady of Lourdes Women's & Children's Hospital
- Our Lady of the Angels Hospital
- Our Lady of the Lake Children's Hospital
- Singing River Hospital
- Slidell Memorial Hospital
- St. Francis Medical Center – Monroe
- St. Tammany Parish Hospital
- Terrebonne General Hospital
- Thibodaux Regional Medical Center
- Touro Infirmary
- University Medical Center
- West Jefferson Medical Center
- Woman's Hospital



March 2021 Flight Path Data

- One flight had to use the Northern flight path due to strong winds from the South.



The yellow box indicates the neighborhood zone for flight avoidance whenever possible, as previously communicated.