



Child Life

# Resource Book

[chnola.org](http://chnola.org)



**Children's Hospital**  
New Orleans  
LCMC Health





## Table of contents

Support groups	2
Resources for people with traumatic brain injuries	4
Resources for people with spinal cord injuries	8
Families helping families	9
Wheelchair vans	10
List of accessible restaurants	11
Adaptive clothing	14
Early steps coordinators	17

# Support groups

## Spinal cord injury

### **Spinal Cord Injury Support Group**

is held monthly on the second Thursday of the month from 3:30–5 pm in M6.

For more information call 504.897.8476.

### **Family Spinal Cord Injury**

**Education Day** is available for families and friends of spinal cord injury/disease survivors on the third Friday of each month.

For more information call 504.897.8591.

**Spinal Cord Education Class** is for patients and families living with changes from spinal cord injury/disease. The class is held daily Monday–Friday in the M9 Dining Room on the 9th floor of Touro.

Additional information is available at 504.897.8476.

### **Baton Rouge Spinal Cord Support Group**

8595 United Plaza Blvd.  
Baton Rouge Rehab Hospital  
Baton Rouge, LA 70809  
Roxane Bingham, Outpatient  
Liasonroxane.bingham@brrehab.com  
225.231.3123

Group meets second Tuesday of every month at noon – lunch provided for SCI group and caregivers.

### **Spinal Cord Injury Support Group**

The Neuro Rehabilitation Center  
Touro  
1401 Foucher St.  
504.897.8419

Online support group:  
Request a peer mentor – Reeve Foundation ([christopherreeve.org](http://christopherreeve.org)) or call 1.800.539.7309

## Brain injury

### **Family Brain Injury Education**

**Day** is available for families and friends of brain injury survivors once a month on a Monday. It will not be scheduled on a Monday that conflicts with the Family Stroke Education Day.

For more information call 504.897.8345.

### **Touro Rehabilitation Center at Touro Neuro Support Group**

This group meets on the first Tuesday of every month from 3:30–4:40 pm.

Meeting place:  
Touro Rehabilitation Center at Touro  
Conference Room on Nursing  
Unit M6  
1401 Foucher St.,  
New Orleans, LA 70115  
[touro.com/content/braininjury.htm](http://touro.com/content/braininjury.htm)

### **Brain Injury Support Group**

Meeting place:  
West Jefferson Medical Center  
4th floor Patient Rehabilitation  
1101 Medical Center Blvd.  
Marrero, LA 70072–3147  
504.349.1343  
[wjmc.org](http://wjmc.org)

**Acquired Brain Injury Survivors of Southeast Louisiana (ABIS)**

This group meets from 1 to 4 pm on the second Saturday of each month.

Meeting place:

The Rosedale Branch of the Jefferson Parish Library  
4036 Jefferson Hwy.  
Jefferson, LA  
504.831.6756  
abigroup.homestead.com

**NW Louisiana Brain Injury Support Group**

This group is for survivors of brain injury, their family and friends, and medical professionals. It meets twice a month at two different locations.

Meeting places:

Cornerstone Hospital  
(formerly Summit Hospital)  
4900 Medical Dr.  
Bossier City, Louisiana  
318.934.0533  
First Tuesday of each month at 7 pm.

St. Luke's United Methodist Church,  
6012 Youree Dr.  
Shreveport, LA  
318.934.0533  
Third Tuesday of each month  
at 7 pm.

Kathy Geyer 318.798.8155  
Ron Newkirk 318.949.2680  
Connie Pope 318.925.9945

**TBI Support Group Support**

This group meets on the third Tuesday of every month from 6-7 pm.

Meeting place:

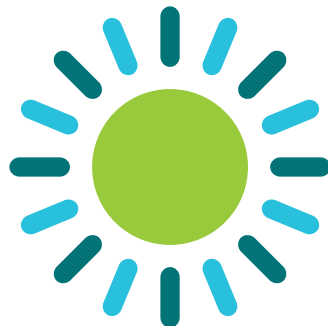
Acadiana  
Brain Injury Facility  
101 Guillot Rd.  
Youngsville, LA 70592.  
Margaret Seidl 337.856.1964 or  
877.852.1964.  
abicenter.com

**Baton Rouge Head Injury Support Group**

PO Box 82971  
Baton Rouge, LA 70808-2971  
This group meets on the first Wednesday of each month from 7 to 9 pm.

Meeting place:

Greenwell Springs Library  
11300 Greenwell Springs Rd.  
Baton Rouge, LA.  
225.274.4440.  
William Moak  
225.978.3990, 225.931.4741  
brhia.org



# Resources for people with traumatic brain injuries

## **Brain Injury Association of America | BIAA ([biausa.org](http://biausa.org))**

- Facts
- News
- Education
- Publication
- Disability rights

Local chapter

3433 Highway 190, Suite 270  
Mandeville, LA 70471

504.982.0685 – Local

1.800.444.6443 – Brain injury  
information

[info@biaa.org](mailto:info@biaa.org)

The Brain Injury Association of  
America's National Family Helpline  
1.800.444.6443

[Familyhelpline@biausa.org](mailto:Familyhelpline@biausa.org)

## **BrainLine | All About Brain Injury and PTSD**

- Information for people with TBI
- Managing symptoms
- Treatment and recovery
- Community and support
- Personal stories from people with TBI
- Information for caregiver
- Family relationships
- Self-care
- Caregiver stories

## **Home - International Brain Injury Association**

- Facts
- Programs and conferences
- Publications

## **National Disability Rights Network - P&A - CAP | NDRN**

- Resources
- Rights and issues
- Conferences and events

## **Families Helping Families of Greater New Orleans – Educating and Empowering Individuals with Disabilities and Their Families ([fhfogn.org](http://fhfogn.org))**

- Resources
- Trainings
- Support groups

## **My ADA Learning: Courses from Southeast ADA Center, Burton Blatt Institute – Syracuse University**

- Free online course on Americans with Disabilities Act

## **Special Needs Resource - eParent provides practical advice, emotional support, and educational information for families of children and adults with disabilities and special healthcare needs as well as to the physicians, allied health care professionals, and educational professionals who are involved in their care and development**

- Exceptional parent organization
- Magazines and adaptive equipment catalogs
- Sports and recreation
- Technology
- Blogs

## **Recreation**

### **Mobility Equipment for The Physically Challenged- [AccessTR.com](http://AccessTR.com)**

- Adaptive equipment

## **NCHPAD - Building Healthy Inclusive Communities**

- Activities
- Accessible fitness
- Resources

### **Therapeutic Recreation | SPAR, LA - Official Website (myspar.org)**

- Activities in Shreveport
- Recreational activities

### **BREC - Parks & Recreation in East Baton Rouge Parish**

- Recreational activities in Baton Rouge

### **Wrightslaw Louisiana Yellow Pages for Kids with Disabilities**

- Different resources in the community

### **Improving the lives of people with disabilities (arcbatonrouge.org)**

- Resources in Baton Rouge for people with disabilities

### **Independent living**

#### **Home | Independent Living Research Utilization (ilru.org)**

- Resources
- Training
- Publications

### **Online forums and discussion boards**

#### **Personal Health Journals for Any Condition | CaringBridge**

- Free, personalized websites that support and connect loved ones during critical illness, treatment, and recovery

#### **Laptic.org**

- Resources

### **Research**

#### **Homepage | NICHD - Eunice Kennedy Shriver National Institute of Child Health and Human Development (nih.gov)**

- National institute of child health and human development
- Research information

### **Brain Trauma Foundation**

- Research

### **Financial help**

#### **Health Resources and Services Administration | HRSA**

- Health resources and services information
- Grant and scholarship applications

#### **NASHIA | National Association of State Head Injury Administrators**

- State resources
- Resource library

#### **Maternal and Child Health Bureau | MCHB (hrsa.gov)**

- Maternal and child health
- Grant funding

#### **Louisiana Department of Children & Family Services**

- Financial support

#### **Home | U.S. Department of Education**

- Grants for education

#### **Traumatic Head and Spinal Cord Injury Trust Fund Program**

The Traumatic Head and Spinal Cord Injury Trust Fund (THSCI) was created by the Louisiana Legislature in 1993 with Act 654, which imposes additional fees on motor vehicle violations in Louisiana for the offenses of driving under the influence, reckless operation, and speeding. These fees provide the funds for this program.

Louisiana's THSCI Program provides services in a flexible, individualized manner to Louisiana citizens with traumatic head or traumatic spinal cord injuries. The program enables individuals to return to a reasonable level of functioning and independent living in their communities.

## Eligibility

To be determined eligible for services, an individual must:

Meet the definition of traumatic head/spinal cord injury as defined (per their treating physician):

Traumatic Spinal Cord Injury - an insult to the spinal cord; not of a degenerative or congenital nature but caused by an external physical force resulting in paraplegia or quadriplegia.

Traumatic Head Injury - an insult to the head, affecting the brain, not of a degenerative or congenital nature, but caused by an external physical force that may produce a diminished or altered state of consciousness, which results in an impairment of cognitive abilities or physical functioning.

Be a resident of Louisiana an officially domiciled in the state at the time of injury and during the provision of services.

Have a reasonable expectation to achieve improvement in functional outcome with assistance (per their treating physician).

Have exhausted all other Medicare and Medicaid sources (as attested to by the applicant).

Provide proof of denial from other sources (if requested).

Be willing to accept services from an approved facility/program.

Complete and submit the appropriate application for services.

## How to apply for services

Call 1.888.891.9441 to apply for services. The application is also available online.

## Services

THSCI services are provided for eligible participants in accordance with each person's Participant Service Plan (PSP) that results in improvements in each participant's functioning in their homes and communities related to their injuries.

Services may include, but are not limited to:

- Medical evaluations
- Post-acute medical care rehabilitation
- Rehabilitative therapies
- Medications/medical supplies
- Personal Care Attendant (PCA) services
- Assistive technology and equipment necessary for activities of daily living
- Durable medical equipment (DME)
- Environmental accessibility modifications and repairs to these modifications
- Vehicle accessibility modifications and repairs to these modifications
- Transportation for non-emergency medical appointments

The Trust Fund will not provide funding for experimental services. The service providers must be approved by the program, and in-state facilities/programs are given priority for approval as service providers. Services are provided on a first-come, first-served basis. Expenditures shall not exceed \$15,000 for any 12-month period or \$50,000 in total expenditures per individual.

Approval or denial of services is determined by the program manager/administrators based on what is best for the program and the participant. The Trust Fund will not pay for services that are provided by other known sources as attested to by the participant during their Functional Assessment.



**Additional Resources**

Application for Services/THSCI Fact Sheet

Guide for Personal Assistance to People with Spinal Cord Injuries

Brain Injury Association of Louisiana

Mailing Address:

Louisiana Department of Health

P. O. Box 629

Baton Rouge, LA 70821-0629

Physical Address:

628 N. 4th St.

Baton Rouge, LA 70802

Phone: 225.342.9500

Fax: 225.342.5568

Medicaid Customer Service

1.888.342.6207

Healthy Louisiana

1.855.229.6848

Traumatic Head & Spinal Cord Injury

Trust Fund Program | La Dept. of

Health



# Resources for people with spinal cord injuries

## Home | Independent Living Research Utilization ([ilru.org](http://ilru.org))

- Independent Living Research Utilization

## Spinal Cord Injury Zone

- Information
- Resources
- Videos

## Spinal Cord Injury Resource Center

- New injury information
- A-Z resources
- Local resources
- Fact sheets

## Ablethrive - United Spinal Association

- Resources
- Support groups

## Online forums and personal websites

### Personal Health Journals for Any Condition | [CaringBridge](http://CaringBridge)

- Free, personalized websites that support and connect loved ones during critical illness, treatment, and recovery

### [Laptic.org](http://Laptic.org)

- Enter la disability talk into the search bar
- Chat room and chart board for parents and children with disabilities, self-advocates, and advocates for people with disabilities in Louisiana

### Sibling Support Project

- For siblings of a child with a spinal cord injury

## Adaptive equipment

### AbleData Website | New Editions Consulting, Inc.

- Adaptive technology
- Education

**LATAN is devoted to helping people of all ages with functional limitations or disabilities to gain greater independence.**

- Assistive technology affordable



# Families helping families

## **Families Helping Families of GNO**

- Mary Jacob, Executive Director
- 700 Hickory Ave. Harahan, LA 70123
- 504.888.9111 or 1.800.766.7736 (toll free)
- Fax: 504.353.2350 Fax
- info@fhfogn.org

## **Families Helping Families of Southeast Louisiana, Inc.**

- Aisha Johnson, Executive Director
- 2401 Westbend Parkway, Suite 3090  
New Orleans, LA 70114
- 504.943.0343 or 1.877.243.7352
- Fax: 504.940.3242
- info@fhfsela.org

## **Families Helping Families of Greater Baton Rouge, Inc.**

- Dr. Marilyn Thornton, Executive Director
- 2356 Drusilla Lane Baton Rouge, LA 70809
- 225.216.7474 or 1.866.216.7474
- Fax: 225.216.7977
- info@fhfgbr.org

## **Bayou Land Families Helping Families, Inc.**

- Charles S. Michel, Ed.D, Executive Director
- 286 Hwy. 3185 Thibodaux, LA 70301
- 985.447.4461 or 1.800.331.5570
- Fax: 985.447.7988
- bayoulandfhf@gmail.com

## **Families Helping Families of Acadiana, Inc.**

- Nicole Flores – Executive Director
- 100 Benman Rd. Lafayette, LA 70506
- 337.984.3458 or 1.855.984.3458
- Fax: 337.984.3468
- info@fhfacadiana.org

## **Families Helping Families of Southwest Louisiana, Inc.**

- Susan Riehn, Executive Director
- 324 W. Hale Lake Charles, LA 70601
- 337.436.2570 or 1.800.894.6558
- Fax: 337.436.2578
- info@fhfswla.org

## **Families Helping Families at the Crossroads of LA, Inc.**

- Jim Sprinkle, Executive Director
- 2840 Military Hwy., Suite A  
Pineville, LA 71360
- 318.641.7373 or 1.800.259.7200
- Fax: 318.640.4299
- fhfxroads@aol.com

## **Families Helping Families**

- Chanel Jackson, Executive Director
- 215 Bobbie St., Suite 100  
Bossier City, LA 71112
- 318.226.4541 or 1.877.226.4541
- Fax: 318.226.4518
- info@fhfregion7.com

## **Families Helping Families of Northeast Louisiana, Inc.**

- Stacey Guidry-Little, Executive Director
- 5200 Northeast Rd. Monroe, LA 71203
- 318.361.0487 or 1.888.300.1320
- Fax: 318.361.0417
- info@fhfnela.org

## **Northshore Families Helping Families, Inc.**

- Karen Artus, Executive Director
- 108 Highland Park Plaza  
Covington, LA 70433
- 985.875.0511 or 1.800.383.8700
- Fax: 985.875.9979
- nfhf@bellsouth.net

# Wheelchair vans

## **Access Vans of La**

225.648.3100

Accessible vans

## **Superior Van And Mobility**

504.323.6556

## **Disabled Dealer Magazine**

1.800.588.5099

Accessible vans

Scooters

Wheelchairs

## **Louisiana Assistive Technology Access Network**

10988 N. Harrells Ferry Rd., Suite 5,

Baton Rouge LA, 70816

225.925.9500

Driving with hand controls

## **Louisiana Driving School**

1352 Lindberg Dr.

Slidell LA, 70458

985.643.7803

safetydriven@gmail.com

## **Baton Rouge Rehab Hospital**

225.927.0567



**List of accessible  
restaurants in  
New Orleans area**

**Accessibility comments**

<b>Sarita's</b>	This has a small bathroom and is difficult to get into.
<b>Mint</b>	This has a spacious inside with possible accessible bathrooms.
<b>Origami</b>	Someone must go inside to open a side door for ramp access.
<b>Dat Dog</b>	There is a ramp on the right side of the building and there are accessible bathrooms.
<b>Midway</b>	There is a portable ramp right inside the door, but it can be difficult to get over the threshold. There is an accessible bathroom behind the kitchen.
<b>Company Burger</b>	The inside is spacious with an accessible bathroom. Orders are taken at the counter.
<b>High Hat</b>	There is a small bump to the threshold.
<b>Ancora</b>	There is an accessible entrance.
<b>Bearcat</b>	There is a ramp to the left side of the building.
<b>Felipe's Mexican Taqueria</b>	All locations are accessible.
<b>Ted's Frostop</b>	There is an accessible entrance.
<b>Avo</b>	It is an accessible space with room to move around.
<b>New York Pizza</b>	The entrance and bathroom are both accessible.
<b>New Orleans Hamburger and Seafood</b>	There is a ramp.
<b>Creole Creamery</b>	The inside is spacious with possible accessible bathrooms.
<b>Pizza Domenica</b>	There is a ramp to get you in the door.
<b>Sukho Thai</b>	Both the bathroom and restaurant are accessible.
<b>Tal's Hummis</b>	There is a slight bump to enter and there is no bathroom.
<b>La Petite Grocery</b>	Accessible bathrooms are tricky to get into when crowded.
<b>GW Fins</b>	The inside is spacious with an easy path to bathroom.
<b>Lebanon's Cafe</b>	The entrance is accessible with outdoor seating.
<b>Panchitas</b>	The inside is small, but wheelchair accessible.
<b>Cibo</b>	There is an inside step down to the dining area, but outside tables are accessible.
<b>Cowbell</b>	There is an accessible ramp in the back.
<b>Milk Bar</b>	
<b>Jacques Imo's</b>	There are some tables on the ground floor and some outside. All bathrooms upstairs are inaccessible.
<b>The Rum House</b>	You can request a portable ramp inside and there are picnic tables for seating.
<b>Theo's Neighborhood Pizza</b>	You can request a portable ramp inside.

<b>Nirvana</b>	This is accessible, but is challenging to get around when crowded.
<b>Magasin Vietnamese Cafe</b>	This is a small space with a steep ramp to get inside. The bathroom is accessible.
<b>Shaya</b>	This has an accessible entrance.
<b>Blue Oak BBQ</b>	This is small but accessible with accessible bathrooms.
<b>Frey Smoked Meat Co.</b>	There is a ramp to the left and the bathroom is accessible and easy to move around.
<b>Willa Jean</b>	There is a ramp you must use once inside. The bathroom is difficult to get to but is accessible.
<b>Delachaise</b>	The inside isn't accessible, and you must order inside. It does have outdoor dining.
<b>Chais Delachaise</b>	There is a ramp in the back and the small patio in the front is accessible.
<b>Superior Grill</b>	There is ramp in the back and bathrooms are accessible.
<b>Frankie And Johnny's</b>	The parking lot is gravel. The bathroom and restaurant are both accessible.
<b>Slice Pizzeria</b>	The bathroom and entrance are accessible, but it is a small space.
<b>Cochon Butcher</b>	This is accessible but small. Most seating is at high-top tables.
<b>St. James's Cheese Company</b>	Uptown location: There is a ramp in the middle of the building. Warehouse location: The entrance is flat.
<b>La Crepe Nanou</b>	This is accessible but small.
<b>St Lawrence</b>	The entrance and bathroom are accessible.
<b>Vincent's</b>	There are a few steps to get in but there is a portable ramp.
<b>Chill Out Cafe</b>	There is a wooden ramp on the side and a bump in the doorway.
<b>Hana</b>	There is a ramp in front but limited seating inside.
<b>District Donuts</b>	There is an accessible entrance.
<b>Steins Market And Deli</b>	It is accessible, but small and difficult to get around.
<b>Humble Bagel</b>	There is an accessible entrance.
<b>Reginelli's Pizzeria</b>	There is a ramp outside.
<b>Jung's Golden Dragon</b>	It is accessible but hard to get around and difficult to get to the bathroom.
<b>Five Happiness</b>	The bathroom and restaurant are accessible. There is a small parking lot with wheelchair spaces.
<b>Del Fuego Taqueria</b>	The bathroom and restaurant are accessible with slight bump to get inside.
<b>Johnny Sanchez</b>	The restaurant and bathroom are accessible.
<b>Parkway Bakery</b>	There is an accessible entrance next to the patio with a big parking lot.
<b>Ba Chi Canteen</b>	The entrance is accessible.

<b>Mopho</b>	The entrance and bathroom are accessible.
<b>Bangkok Thai</b>	It has an accessible entrance but is a small restaurant.
<b>Taqueria Corona</b>	It has an accessible entrance but is a small restaurant.
<b>Gracious Bakery</b>	There is a ramp to enter and is big enough to move around.
<b>Bywater Bakery</b>	It is accessible.
<b>Pizza Delicious</b>	The inside and bathroom are accessible, and the small outdoor patio is easily accessed.
<b>Toups Meatery</b>	It is accessible but small and difficult to get around.
<b>Central City BBQ</b>	The bathrooms are easily accessible.
<b>Saba</b>	There is a ramp in the back and accessible bathrooms.
<b>Mandina's</b>	There is a ramp at the main entrance. The bathroom is accessed by stairs and staff must unlock it.
<b>Venezia</b>	The bathroom is not accessible, but the restaurant is.
<b>Marjie's Grill</b>	The entrance is accessible but steep. There are two accessible bathrooms.
<b>Domenica</b>	The entrance and bathroom are accessible through the hotel lobby.
<b>Tommy's Cuisine</b>	The restaurant and bathrooms are accessible.
<b>Liuzza's</b>	There is an accessible entrance.
<b>Mosca's</b>	It is accessible with an area to park on the gravel.
<b>Costera</b>	There is an accessible entrance and bathroom.
<b>Hieux Seafood</b>	There is an accessible entrance.
<b>Urban South</b>	There is an accessible entrance.
<b>Queen Trini Lisa</b>	There is an accessible entrance.
<b>Hansons</b>	There is an accessible entrance but no bathroom.
<b>Lily's</b>	There is an accessible entrance but the inside is small.
<b>Deanie's Seafood</b>	There is a ramp to enter.
<b>Station 6</b>	There is an accessible entrance.
<b>Pho Tran</b>	There is an accessible entrance.
<b>Hotel St Vincent</b>	There is an accessible entrance.



# Adaptive clothing

## Examples of what items might look like

Seat belt sliders



Side and front open pants



Side zip shoes

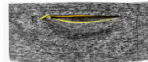


Ankle Foot Orthosis

No tie laces



Insulin pump band



G Tube/trach pad



Side zip gloves



Front velcro onesie



One handed belt



Easy access shirt



Adaptive bra and underwear



Port shower cover





### **adaptationsbyadrian.com**

- Custom Sitter Wheelchair Jeans – Denim
- Waterproof Breathable Winter or Rain Cape (Custom Made)
- Seat Belt Sliders

### **JCpenney Adaptive (men, women, and children's clothing)**

- Front and side opening jeans
- Adaptive bra and underwear
- Magnetic opening shirts
- Sensory friendly seams and tags
- Side zip shoes

### **Zappos Adaptive**

- No tie laces
- Insulin pump belt

### **Vans Adaptive (Men, women, and children's sizes)**

- Side zip shoes

### **UGG Adaptive (men, women, and children's sizes)**

Side zip shoes

### **Tommy Hilfigre Adaptive (men, women, and children's clothing)**

- Easy open necklines
- Side seam and wide leg opening
- Elastic and adjustable waists
- One handed zippers
- Magnetic closures

### **ZIP Glove**

- Side opening zip on glove

### **Stride Rite**

- Side zip and Velcro shoes

### **Steve Madden kids shoes**

- Side zip shoes

### **Spoonie threads**

- Trach pads
- G-Tube pads
- Front Velcro onesie

### **Single and different size shoe brands**

- Billy singles
- Birkenstock singles
- Bogs singles
- Brooks running singles
- Converse dingles
- Crocs singles
- Dansko singles
- Dr. Martens singles
- Florsheim singles
- Friendly shoes singles
- Keds singles
- Keen singles
- Merrell singles
- PUMA singles
- Reebok singles
- RSVP singles
- SOREL singles
- Stride rite singles
- Teva singles
- UGG universal singles
- Vans singles

### **Silverts (men and women)**

- Velcro fastening slippers

### **Reebok**

#### **(men, women, and children's sizes)**

- Side zip shoes

### **Myself Belts**

- Easy one-handed belt

### **Friendly Shoes**

#### **(men, women, and kids sizing)**

- Side zip shoes

### **Converse**

- Side zip and Velcro shoes

### **Billy footwear (Men, women, and children's sizes)**

- Side zip shoes

### **Target adaptive**

#### **(kids and limited men and women sizing)**

- Side snap pants
- Abdominal access onesie
- Sensory friendly clothing
- Side zip shoes

**Kohls Adaptive**  
**(men, women, and children's sizes)**

- Front and side opening jeans
- Sensory friendly clothing
- Easy access shirt

**Liberare (women sizes)**

- Front opening bras
- Side opening underwear

**Care and Wear**  
**(men, women, and children's sizes)**

- Port shower cover
- Easy access shirt
- Zip open lower pant leg

**Lands End**  
**(men, women, and children's sizes)**

- Magnetic closing pants and shirts
- Velcro closing pants and shirts
- Nike flyease
- Zipper opening shoes



# EarlySteps Regional Coordinators

**Joyce Ridgeway**

504.620.2209(o) 504.620.2846 (f)

[joyce.ridgeway@la.gov](mailto:joyce.ridgeway@la.gov)

Metropolitan Human Services District  
1010 Common St., Suite 600  
New Orleans, LA 70112

**Valencia Allen**

225.925.7090 (o) 225.925.7080 (f)

[valencia.allen@la.gov](mailto:valencia.allen@la.gov)

Capital Area Human Services District  
4615 Government St., Bin #16  
Baton Rouge, LA 70806

**Timothy Butler**

985.876.8846 (o) 985.876.8805 (f)

[timothy.butler@la.gov](mailto:timothy.butler@la.gov)

South Central Human Services  
Authority  
5593 Highway 311  
Houma, LA 70360

**Monica Dowden**

337.262.1890 (o) 337.262.5233 (f)

[monica.dowden@la.gov](mailto:monica.dowden@la.gov)

Acadiana Human Services Authority  
302 Dulles Dr.  
Lafayette, LA 70506

**Steven Ivey**

337.475.4831 (o) 337.475.8055 (f) steve.

[ivey@la.gov](mailto:ivey@la.gov)

Imperial Calcasieu Human Services  
3501 5th Ave., Suite C-2  
Lake Charles, LA 70607

**Penny Thibodaux**

318.487.2414(o) 318.484.2458 (o)

[penny.thibodeaux@la.gov](mailto:penny.thibodeaux@la.gov)

Central Louisiana Human Services  
Authority  
429 Murray St., Suite B  
Alexandria, LA 71301

**April Hearron**

318.741.7149 (o) 318.741.7445 (f)

[april.hearron@la.gov](mailto:april.hearron@la.gov)

Northwest Louisiana Human  
Services Authority  
3018 Old Minden Rd. #1211  
Bossier City, LA 71112

**Tracy Crump**

318.361.7237(o) 318.362.5305 (f)

[tracy.crump@la.gov](mailto:tracy.crump@la.gov)

Region 8 OPH Office  
1650 DeSiard St.  
Monroe, LA 71211

**Wanda Stroud**

225.567.1248 (o) 225.567.1257 (f)

[wanda.stroud@la.gov](mailto:wanda.stroud@la.gov)

Northlake Resource Center  
5439 Live Oak Dr.  
Hammond, LA 70401

# EarlySteps System Point of Entry

**Jessica Rodrigue**

504.595.3408 (o) 504.595.3158 (f)  
[jrodrigue@laeasterseals.com](mailto:jrodrigue@laeasterseals.com)  
1010 Common, Suite 2440  
New Orleans, LA 70112

**Brian Jakes, Jr.**

985.447.6550 (o) 985.447.6513 (f)  
[brian.jakes2@selahec.org](mailto:brian.jakes2@selahec.org)  
602 Parish Road  
Thibodaux, LA 70301

**Mary F. Hockless**

337.359.8748 (o) 337.359.8747 (f)  
[referral@firststeps3.com](mailto:referral@firststeps3.com)  
138 East Main St.  
New Iberia, LA 70560

**Kim Williams**

318.226.8038 (o) 318.425.8295 (f)  
[kim.spoe@gmail.com](mailto:kim.spoe@gmail.com)  
2620 Centenary Blvd.  
Building 2, Suite 249  
Shreveport, LA 71104

**Brian Jakes, Jr.**

985.429.1252 (o) 985.429.1613 (f)  
[brian.jakes2@selahec.org](mailto:brian.jakes2@selahec.org)  
1302 J.W. Davis Dr.  
Hammond, LA 70403

**Brian Jakes, Jr.**

504.496.0165 (o) 504.496.0167 (f)  
[brian.jakes2@selahec.org](mailto:brian.jakes2@selahec.org)  
1321 26th St.  
Kenner, LA 70026

**Brian Jakes, Jr.**

225.925.2426 (o) 225.925.1370 (f)  
[brian.jakes2@selahec.org](mailto:brian.jakes2@selahec.org)  
4324 S. Sherwood Forest Blvd.,  
Suite B-155, Suite A  
Baton Rouge, LA 70809

**Mary F. Hockless**

337.359.8748 (o) 337.359.8747 (f)  
[referral@firststeps3.com](mailto:referral@firststeps3.com)  
138 East Main St.  
New Iberia, LA 70560

**Ariana Alexander**

318.487.1165 (o) 318.445.4990 (f)  
[aalexander@laeasterseals.com](mailto:aalexander@laeasterseals.com)  
700 Main St.  
Pineville, LA 71360

**Rebecca Walker**

318.322.4788 (o) 318.322.1549 (f)  
[rwalker@laeasterseals.com](mailto:rwalker@laeasterseals.com)  
1863 Avenue of America  
Monroe, LA 71201









Child Life

# Resource Book

[chnola.org](http://chnola.org)