

Monthly Children's Hospital Helicopter Activity Summary

December 2020



26

Patient Transport Flights



0

Flights Used the Northern Flight Path

8

Emergent Overnight Patient Transport Flights



55

Flights to and from Lakefront Airport



Patients were flown to Children's Hospital for...

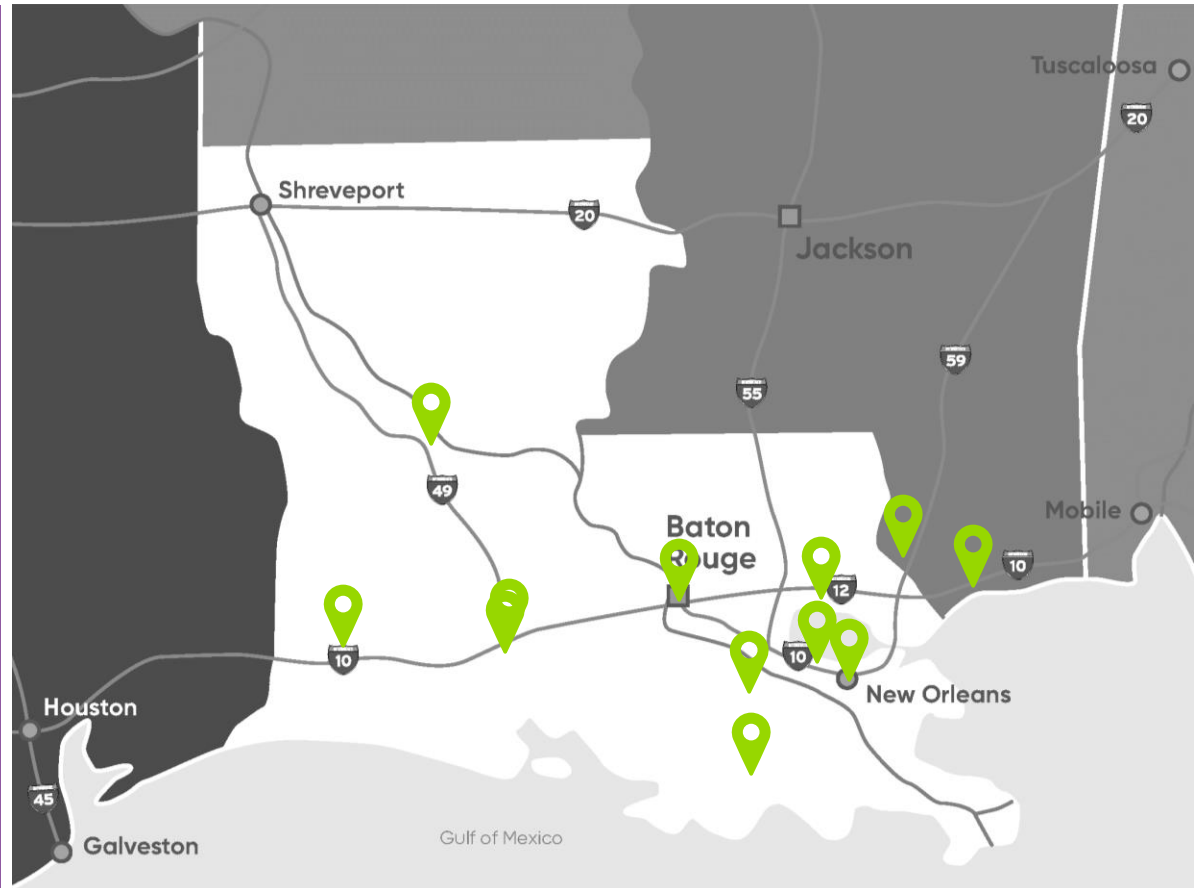
- 10 **Pediatric Critical Care Patients**
Example: multi-system organ failure, suicide attempt
- 10 **Neonatal Intensive Care Patients**
Example: 0 day-old needing neurosurgery
- 5 **Cardiac Critical Care Patients**
Example: newborn with congenital heart defects
- 1 **Trauma Patients**
Example: motor vehicle accident



Children's Hospital
New Orleans
LCMC Health

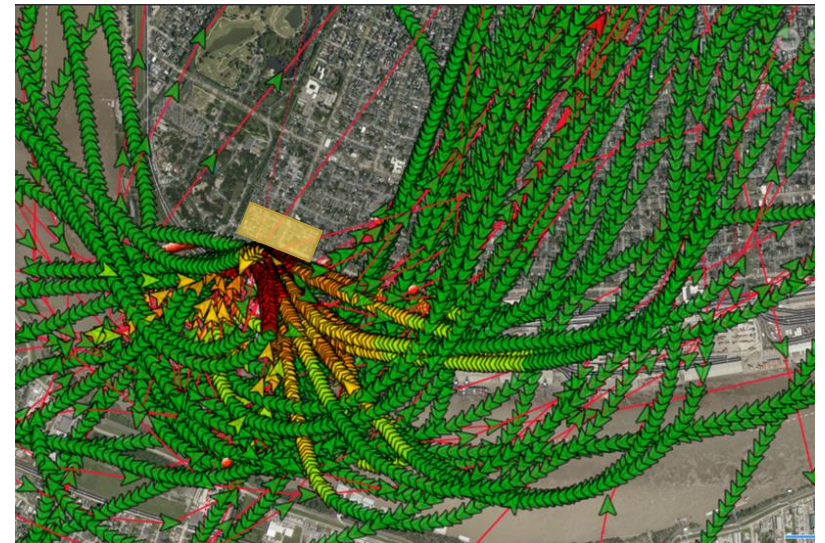
Where were patients flown from?

- East Jefferson General Hospital
- Highland Community Hospital
- Lake Charles Memorial
- Memorial Hospital at Gulfport
- North Oaks Medical Center
- Ochsner Lafayette General
- Our Lady of Lourdes Women's and Children's Hospital
- Our Lady of the Lake Children's Hospital
- Rapides Women's and Children's
- Terrebonne General
- Thibodaux Regional
- Touro Infirmary



December Flight Path Data

- There were no helicopter flights using the northern flight path in December.
- Red lines on map indicate false GPS tracking.



The yellow box indicates the neighborhood zone for flight avoidance whenever possible, as previously communicated.